



CADENCE CAPITAL

JANUARY 2010 INVESTOR REPORT

FUND NTA

Cadence Capital unit price estimates as at 31st January 2010:

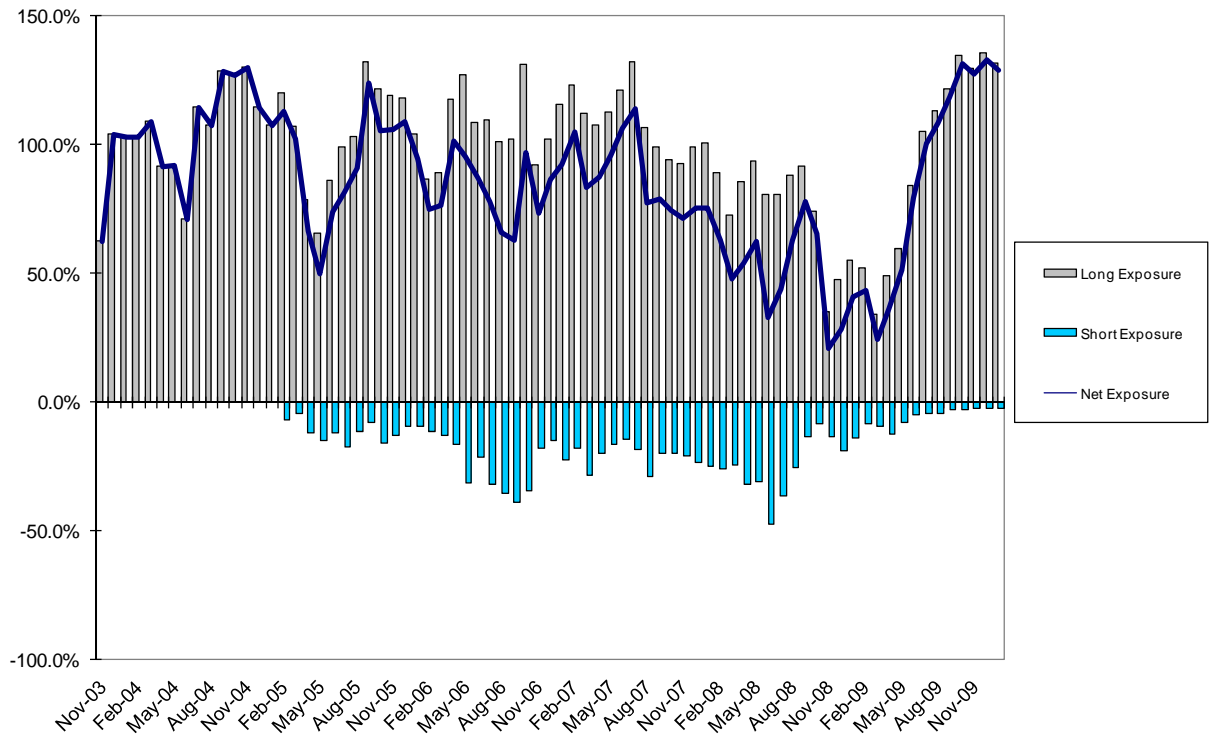
NTA	\$2.04737
NTA Post Fees and Distribution	\$1.22450

FUND PERFORMANCE*

Performance to 31st January 2010	CC	All Ords	Outperformance
1 Month	-1.97%	-5.85%	
1 Year	48.92%	38.25%	+10.67%
Annualised return since inception (75 months)	12.15%	9.96%	+2.19%
Inception to date accumulated return (75 months)	104.74%	81.05%	+23.69%

* Before Management and Performance Fees

PORTFOLIO EXPOSURE ANALYSIS



PORTFOLIO SECTOR ANALYSIS

Sector	Long	Short	Net
Materials	46.94%		46.94%
Banks	25.87%		25.87%
Software & Services	24.93%		24.93%
Diversified Financials	13.49%		13.49%
Telecommunication Services	6.82%		6.82%
Energy	3.71%		3.71%
Utilities	3.59%		3.59%
Technology Hardware & Equipment	1.76%		1.76%
Capital Goods	1.72%		1.72%
Consumer Services	1.30%		1.30%
Retailing	1.26%		1.26%
Transportation		-2.41%	-2.41%
Exposure	131.40%	-2.41%	128.99%
Cash Borrowings			28.99%

TOP 20 PORTFOLIO POSITIONS

ASX Code	Position	Direction	% Holding
RHG	RHG Ltd	Long	15.8%
RIO	Rio Tinto Ltd	Long	8.6%
CUS	Customers Ltd	Long	8.1%
BVA	Bravura Solutions Ltd	Long	7.6%
RKN	Reckon Ltd	Long	7.5%
DIO	Dioro Exploration NL	Long	6.0%
NAB	National Australia Bank Ltd	Long	5.4%
HGG	Henderson Group PLC	Long	4.6%
CFE	Cape Lambert Iron Ore Ltd	Long	4.6%
PNA	PanAust Ltd	Long	4.5%
MCC	MacArthur Coal Ltd	Long	4.5%
TPM	TPG Telecom Ltd	Long	4.2%
AGO	Atlas Iron Ltd	Long	3.7%
PIH	Prime Infrastructure Group	Long	3.6%
NKP	Nkwe Platinum Limited	Long	3.5%
FFF	Firstfolio Limited	Long	2.8%
TCL	Transurban Group	Short	-2.4%
AOE	Arrow Energy Ltd/Australia	Long	2.4%
FSA	FSA Group Ltd	Long	2.1%
ANZ	Australia & New Zealand Banking Group	Long	1.9%
Top Twenty Portfolio Holdings			99.0%

MARKET AND COMMENTARY

For the six years and three months to 31st January 2010, Cadence Capital has returned a gross performance of 104.7% compared to a rise in the All Ordinaries Accumulation Index of 81.1% during the same period.

We are pleased to report that the fund has performed well so far this year and for the seven months ended 31st January 2010 the fund is up 33.6% (Gross) outperforming the All Ordinaries Accumulation Index by 14.9%. During the month of January, Cadence Capital returned a negative gross performance of -1.97% compared to a decrease in the All Ordinaries Accumulation Index of -5.85% and a decrease in the Small Ordinaries Accumulation Index of -7.43%.

The fund finished the month 131.4% long, 2.4% short and with a net long exposure of 129%. The net exposure for December 2009 was 132.8%.

CADENCE CAPITAL NEWS

On the 25th January 2010, Karl Siegling, Portfolio Manager for Cadence Capital Fund was interviewed by CNBC Australia on the resources sector. To watch both this and all past interviews please visit the 'News' section of the Cadence Capital website at www.cadencecapital.com.au. Please note that you may be required to register online with CNBC to view their video links. This is a once off registration that is free.

Please also note that as communicated to you last month, we will be complementing these interviews with our own web broadcasts. It is the intention that these webcasts will be broadcast once a quarter and that they will cover amongst other things, updates on both the market and more specifically discussions around positions that the fund is invested in. These webcasts will also be able to be accessed through the 'News' section of the Cadence Capital website.

DISCLAIMER

The information contained in this report has been prepared with all reasonable care by Cadence Asset Management Pty Ltd. It is provided for information purposes only and should not be construed as an offer or solicitation. It should not be relied upon as the sole basis for making an investment decision, nor should a decision be made until the risks of the investment are fully understood. Cadence Asset Management Pty Ltd assumes no responsibilities for errors, inaccuracies or omissions in this summary. The information is provided without warranty of any kind. Past performance is not indicative of future performance. Investors may not get back the full amount originally invested.